

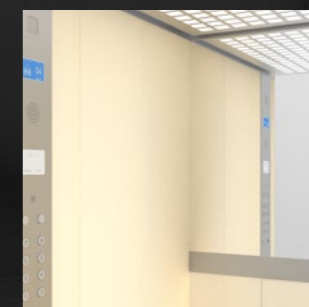
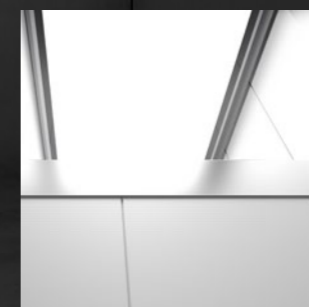


**Amplia gama de acabados incluidos en precio base del modelo.**

**Paños:** Chapa plastificada\* (skinplate).  
**Techo:** Abatible de chapa pintada\*\* con policarbonato blanco opal, iluminación por tubos LED.  
**Suelo:** Goma antideslizante negra.  
**Perfilería:** Chapa plastificada negra (skinplate).  
**Embocaduras:** Acero inoxidable satinado.  
**Espejo:** Plata, de seguridad de 4 mm con canto pulido, ½ altura al fondo. Falso pasamanos bajo espejo.  
**Botonera:** Hueco para botonera de placa (botonera de columna opcional).  
\*Skinplates según ficha de acabados y colores estándar.  
\*\*Chapa pintada negra o blanca.

**Wide range of finishes included in the base price of the model.**

**Car walls:** Plastic-covered plate\* (skinplate).  
**Ceiling:** Hinged painted\*\* plate with opal-white polycarbonate, LED tubes lighting.  
**Floor:** Anti-slip rubber black.  
**Profiles:** Black plastic-covered plate (skinplate).  
**Car entrance:** Satin stainless steel.  
**Mirror:** Silver, 4 mm safety glass with polished edge, ½ height on rear wall. False handrail below mirror.  
**Car operating panel:** Hole for plate operating panel (column operating panel optional).  
\*Skinplates included in list of standard finishings and colours.  
\*\* Painted plate in black or white.

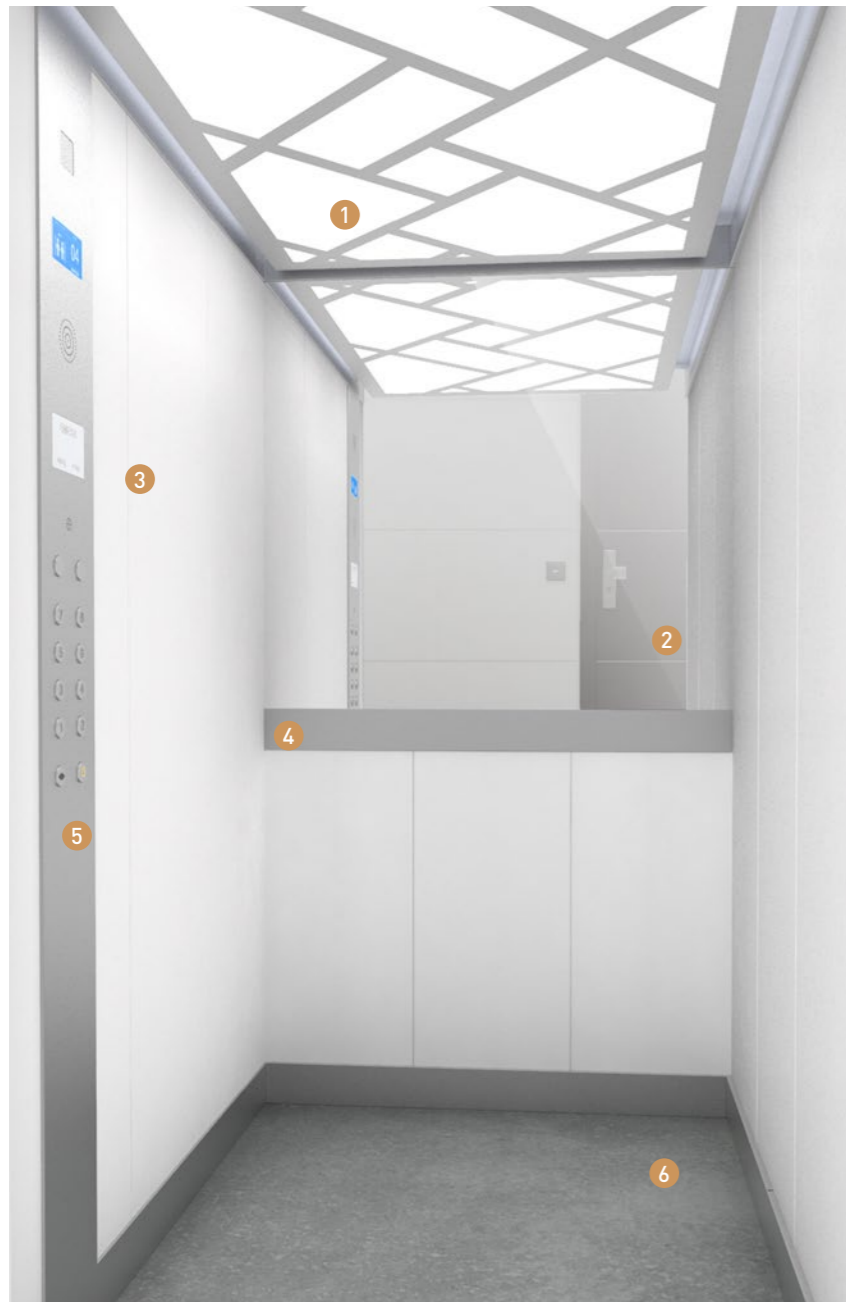


Sansa S-01

BASIC

# Sansa S-01

BASIC



## EMESA

Estampaciones Metálicas Épila, S.A.  
A Saveria Group Company

Styling by: líneadiseño

### ACABADOS / FEATURES:

#### Techo / Ceiling 1

Chapa pintada Gris  
Metalizado RAL 9006  
RAL 9006 Metallic Grey  
painted plate

#### Espejo / Mirror 2

1/2 altura, plata 4 mm  
de seguridad  
1/2 height, silver 4 mm  
safety

#### Paredes / Car walls 3

Skinplate Blanco  
White Skinplate

#### Perfilería / Profiles 4

Chapa pintada Gris  
Metalizado RAL 9006  
RAL 9006 Metallic Grey  
painted plate

#### Botonera / Car Operating Panel 5

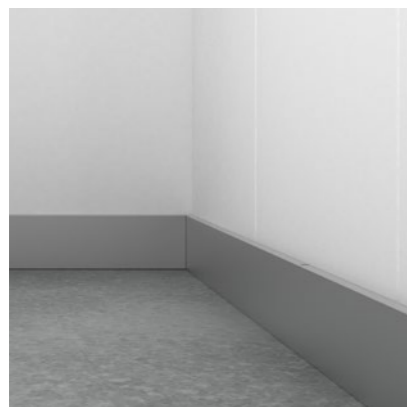
Chapa pintada Gris  
Metalizado RAL 9006  
RAL 9006 Metallic Grey  
painted plate

#### Suelo / Floor 6

Goma antideslizante Gris  
Cemento  
Grey Concrete anti slip  
rubber

#### Estructura / Structure

Chapa directa  
Direct plate



Cabina con acabados incluidos en precio base del modelo. / Cabin with finishes included in the base price of the model.

# Sansa S-01

BASIC



## EMESA

Estampaciones Metálicas Épita, S.A.  
A Saveria Group Company

Styling by: líneadiseño

### ACABADOS / FEATURES:

#### Techo / Ceiling 1

Chapa pintada Negro  
RAL 9005  
RAL 9005 Black painted  
plate

#### Espejo / Mirror 2

1/2 altura, plata 4 mm  
de seguridad  
1/2 height, silver 4 mm  
safety

#### Paredes / Car walls 3

Skinplate Acero inox.  
Stainless steel Skinplate

#### Perfilería / Profiles 4

Chapa pintada Negro  
RAL 9005  
RAL 9005 Black painted  
plate

#### Botonera / Car Operating Panel 5

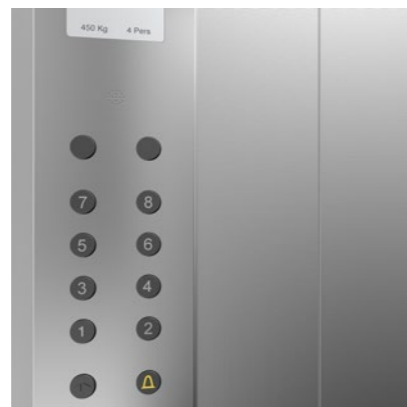
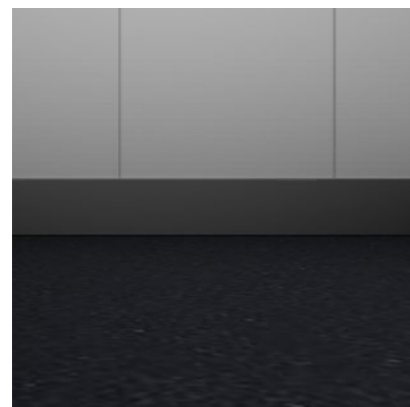
Acero inox. satinado  
Satin stainless steel

#### Suelo / Floor 6

Goma antideslizante  
Negra  
Black anti slip rubber

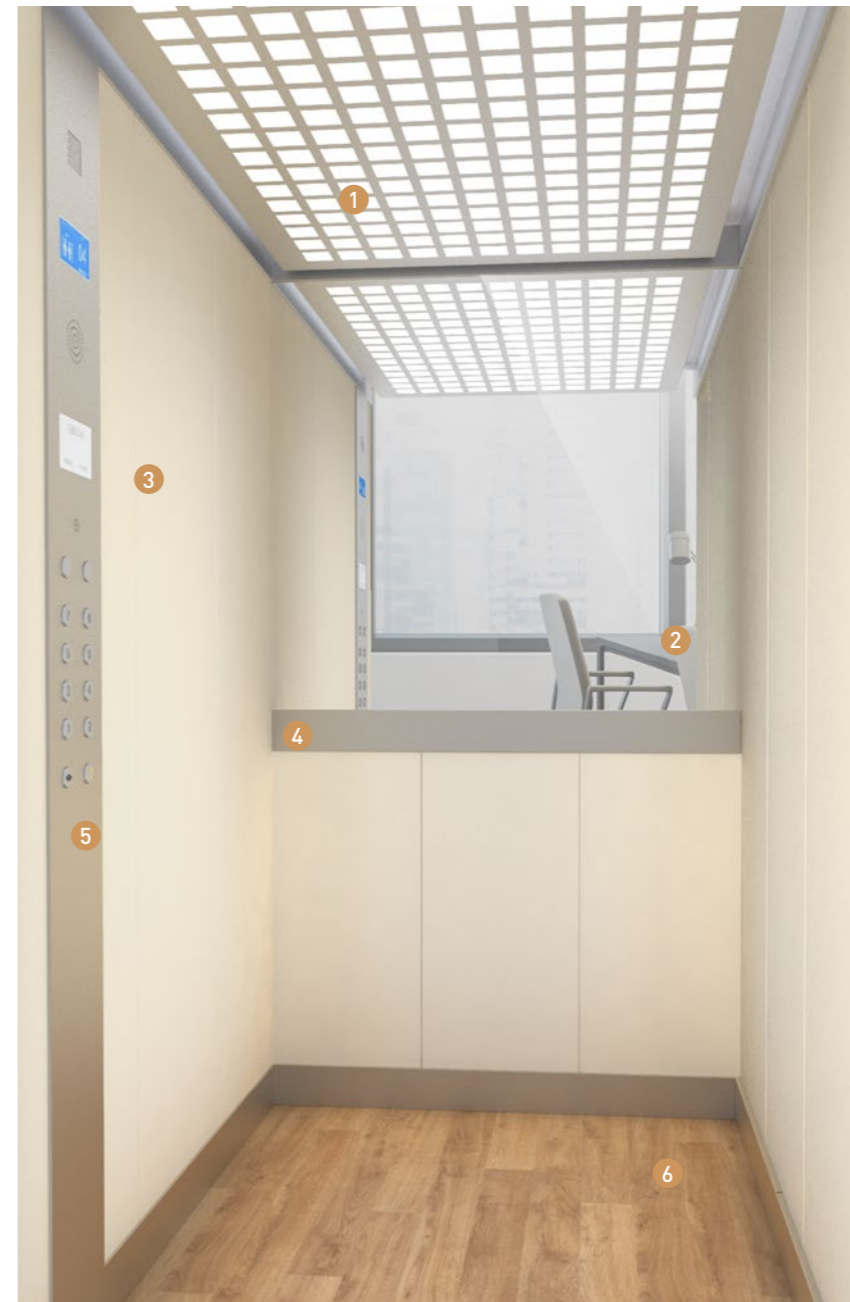
#### Estructura / Structure

Chapa directa  
Direct plate



# Sansa S-01

BASIC



## EMESA

Estampaciones Metálicas Épita, S.A.  
A Saveria Group Company

Styling by: líneadiseño

### ACABADOS / FEATURES:

#### Techo / Ceiling 1

Chapa pintada Gris  
Metalizado RAL 9006  
RAL 9006 Metallic Grey  
painted plate

#### Espejo / Mirror 2

1/2 altura, plata 4 mm  
de seguridad  
1/2 height, silver 4 mm  
safety

#### Paredes / Car walls 3

Skinplate Crema  
Cream Skinplate

#### Perfilería / Profiles 4

Chapa pintada Gris  
Metalizado RAL 9006  
RAL 9006 Metallic Grey  
painted plate

#### Botonera / Car Operating Panel 5

Chapa pintada Gris  
Metalizado RAL 9006  
RAL 9006 Metallic Grey  
painted plate

#### Suelo / Floor 6

Goma antideslizante  
Roble  
Oak anti slip rubber

#### Estructura / Structure

Chapa directa  
Direct plate

